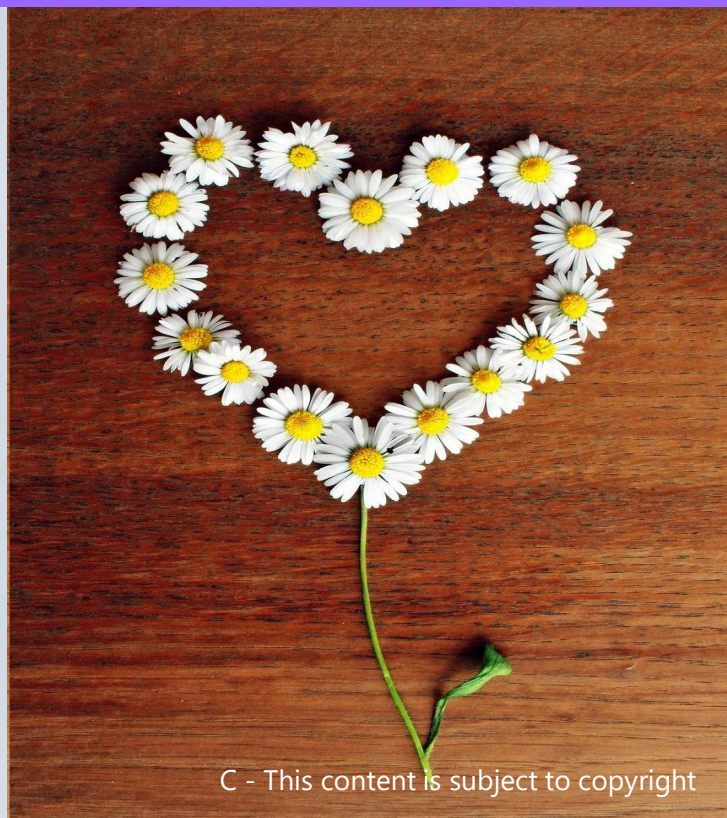


A photograph of two women in a floral workshop. The woman on the left is wearing a light green apron and is laughing joyfully. The woman on the right is wearing a dark blue sweater and is holding a pink rose. They are standing in front of a wooden counter with various floral arrangements and tools. The background features a mirror, a sign that says "Enjoy with Our Flowers", and various floral decorations.

**Workshop on  
Employee engagement with  
head & heart**

**Do you want your organization's people to have behavioral commitment at work?**

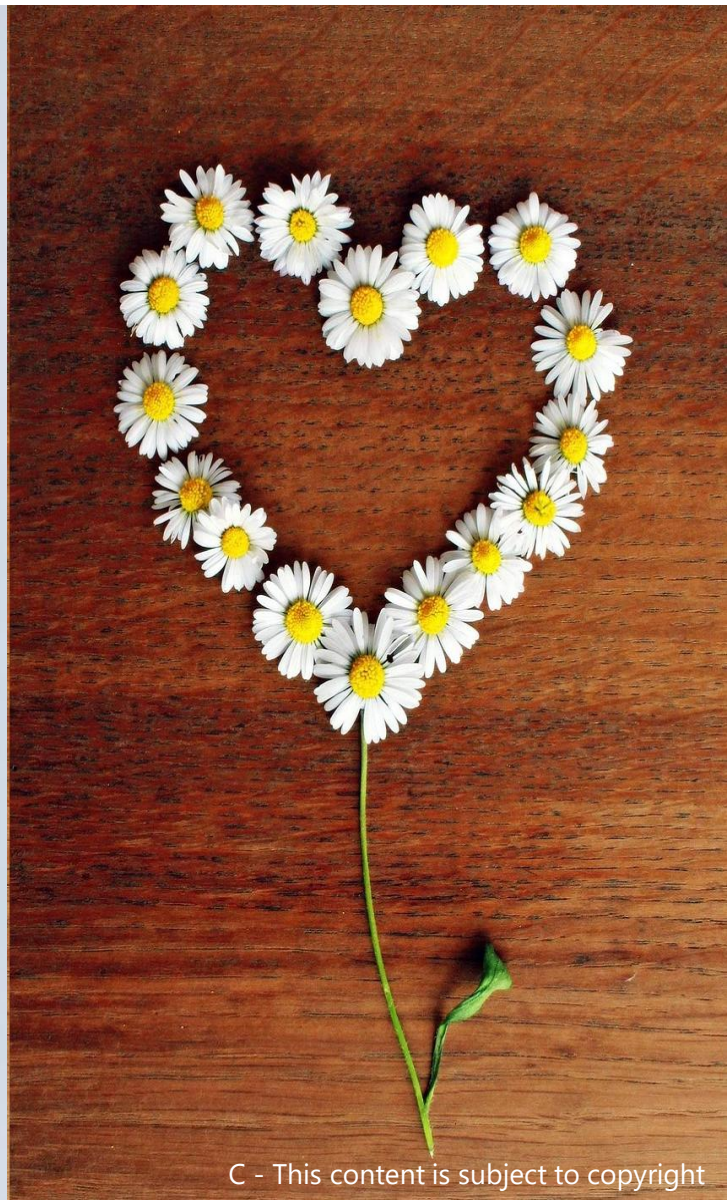
**Do you think your people are engaged with head & heart at work?**



**Do you want your people to put in extra effort, take initiative to improve the organization & actively promote the organization to others ?**

**Do you have a journey for your managers/ leaders to have a strategy to engage people with head & heart ?**

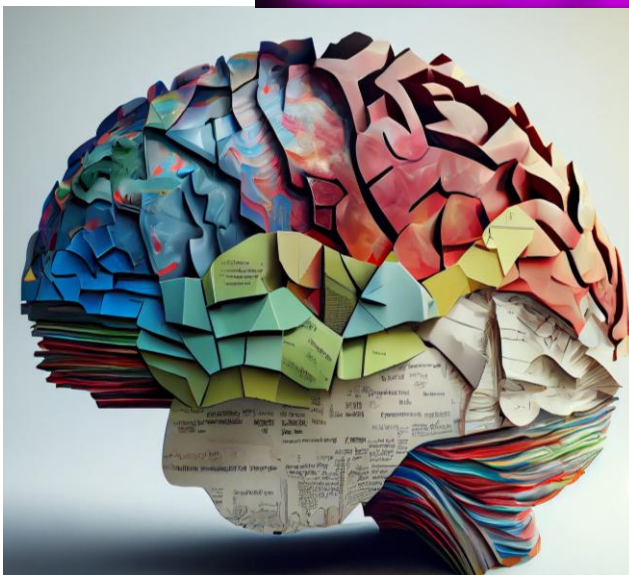
**We partner to solve the puzzle with a creative twist, with a 1/2-day workshop for your leaders!**



## 6 b viii) Employee engagement with head & heart

**Behavioral commitment (Hands) comes when the employee is engaged with head & heart both.**

**Then the employees put extra effort, take initiative to improve the organization & actively promote the organization to others.**



# Employee engagement with head & heart

## Workshop flow

This workshop upskill managers/ leaders, as they:

### Learn and

1. Explore the head, heart & hand model of employee engagement
2. Discuss & curate ideas to engage a team with rational & emotional commitment

### Act to

3. To apply this model to understand all team members needs better
4. To innovate and craft employee engagement solution, for different audience based on rational & emotional commitment



## 6 b viii) Employee engagement with head & heart work samples

### Pick your Take

Head



Heart



Both



### Unravelling the Head & heart model of employee Engagement

Employee Engagement is the heightened emotional & intellectual connection that an employee has for his /her job, organization, manager or coworker that in turn, influences him/her to apply additional discretionary effort to his/her work.

Source: CEB's Head & Heart Model



Head

Rational Commitment



Heart

Emotional Commitment



Hands

Behavioural Commitment

### Unravelling the Head & heart model

**Behavioral commitment (Hands) comes when the employee is engaged with Head & Heart both.**

Here the employee thinks –

**I am willing to put in extra effort  
I take initiative to improve the organization  
I actively promote the organization to others**



Sample content

C - This content is subject to copyright



**Do write to our Genie :**

[contact@creativelearningsacademy.com](mailto:contact@creativelearningsacademy.com)

[www.creativelearningsacademy.com](http://www.creativelearningsacademy.com)

**Creative learnings academy**

**Think organization growth, culture &  
talent happiness creatively**

**Making organizations next generation ready**



**Creative learnings academy**  
**Let's co-create magic !**

C - This content is subject to copyright



**Let's launch a**

**'Employee engagement  
with head & heart'**

**immersive workshop journey for your  
learners in just ½ a day.**

